

Product Data Sheet

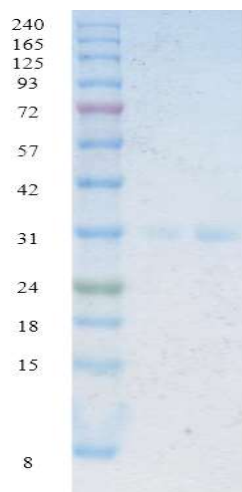
□ Cat # POTY11-A
□ Cat# POTY15-R-25

Goat Anti-Potato Virus Y Coat Protein Antibody
Recombinant Potato Virus Y Coat Protein

Size: 100 ug
Size: 25 ug

Potato virus Y (PVY) is a pathogenic plant virus belonging to the family *Potyviridae*. PVY infection of potatoes results in a variety of symptoms. The most detrimental is 'Potato tuber necrotic ringspot disease' (PTNRD). PVY is transmissible by aphid vectors but may also remain dormant in seed potatoes. PVY infects many important plant species such as potatoes, tobacco, tomatoes, and pepper. PVY may be transmitted to potatoes through grafting, plant sap inoculation, and aphid transmission.

Source of Immunogen and antibody



Potato Virus Y Coat protein **POTY15-R-25** (Accession# AY745491) was expressed in *E. coli*. It contains a c-terminal His-tag. The protein was expressed as a full-length protein. It migrates as a band of approximately 30 kDa in reducing/denaturing conditions. It is supplied in Tris, pH 8+8M Urea

Lane 1: 0.3 ug of Coat protein
Lane 2: 0.6 ug of Coat protein

Host: Goat

Clonality: Polyclonal

Purification: Antigen affinity purified through a Potato Virus Y Coat protein coupled agarose column

Form & Storage of Antibodies

Affinity purified IgG

□ 100 ug/200 ul Solution; Concentration: 0.5 mg/ml
Supplied in PBS pH 7.4, contains no preservative or carrier proteins.

□ **Lyophilized powder**

Lyophilized from a 0.5 mg/ml formulation containing PBS, pH 7.4+3% trehalose. Reconstitute in 200 ul distilled water to 0.5 mg/ml

Storage

Short-term: 1 month at 4°C

Long-term: at -20°C or below in suitable aliquots after reconstitution. Glycerol may be added to a final concentration of 50% and the antibody can be stored un-aliquoted at -20°C.

Stability: 6-12 months at -20°C or below.

Recommended Usages:

Western Blotting: 0.5-2 ug/ml

ELISA: Assay dependent concentration

Lateral flow Immunoassay: Assay dependent concentration

Cross reactivity: The Coat protein used as an immunogen exhibits >90% homology across various strains of PVY. It has ~50% homology with Pepper mottle virus, Plum pox potyvirus, Turnip mosaic virus, Lettuce mosaic virus, Potato virus A, Tobacco vein mottling virus, Tobacco etch virus, Papaya ringspot virus, Pea seed-borne mosaic virus, Bean Yellow mosaic virus, Beet mosaic virus, Peanut mottle mosaic virus, Zucchini yellow mosaic virus, and Soybean mosaic virus

This product is for in vitro research use only.

Related Material available for ADI

Catalog#	Description
CMV15-R-25	Recombinant Cucumber Mosaic Virus Coat Protein
CMV11-A	Goat anti-Cucumber Mosaic Virus Coat Protein antibody
POTX15-R-25	Recombinant Potato Virus X Coat Protein
POTX11-A	Goat anti-Potato Virus X Coat Protein
TMV11-A	Rabbit Anti-Tobacco Mosaic Virus Coat Protein antibody
TMV15-R-100	Recombinant E.coli Tobacco Mosaic virus Coat Protein (full length, >95% Pure, His-tag)

POTY11-A

190724IA