
Human Lymphatic vessel endothelial hyaluronic acid receptor 1 antibody

□ Cat # LYVE1H-A

Rabbit anti-Human LYVE1 antibody

SIZE: 100 ug

Ligand-specific transporter trafficking between intracellular organelles (TGN) and the plasma membrane. Plays a role in autocrine regulation of cell growth mediated by growth regulators containing cell surface retention sequence binding (CRS). May act as a hyaluronan (HA) transporter, either mediating its uptake for catabolism within lymphatic endothelial cells themselves, or its transport into the lumen of afferent lymphatic vessels for subsequent re-uptake and degradation in lymph nodes.

Source of Antigen or Antibodies**Uniprot:** Q9Y5Y7**Host:** Rabbit**Clonality:** Polyclonal**Purification:** Ammonium sulfate followed by peptide affinity purification**Immunogen:** Synthetic peptide derived from the cytoplasmic region of Human LYVE1**Reactivity:** Human**Cross reactivity:** The peptide region used as an immunogen exhibits the following % homology with various species; 95% Monkey, 86% Mouse, Chinese Hamster, 76% Goat and Sheep. Reactivity has only been assessed in Humans.**Subcellular Location:** Membrane**Alternative name:** Cell surface retention sequence-binding protein 1. Extracellular link domain-containing protein 1. Hyaluronic acid receptor**Tissue specificity:** Mainly expressed in endothelial cells lining lymphatic vessels**Recommended Secondary Antibody:** Goat anti-Rabbit IgG-HRP (**ADI cat#20320**)**Negative Control:** Non-immune Rabbit IgG (**ADI cat# 20009-1**).**Form & Storage of Antibodies****Affinity pure IgG**

□ Solution

Concentration: 0.5 mg/ml Volume: 200 ul
Supplied in PBS pH 7.4 + 0.1% BSA□ **Lyophilized powder**

Reconstitute powder in 200 ul distilled water to 0.5 mg/ml

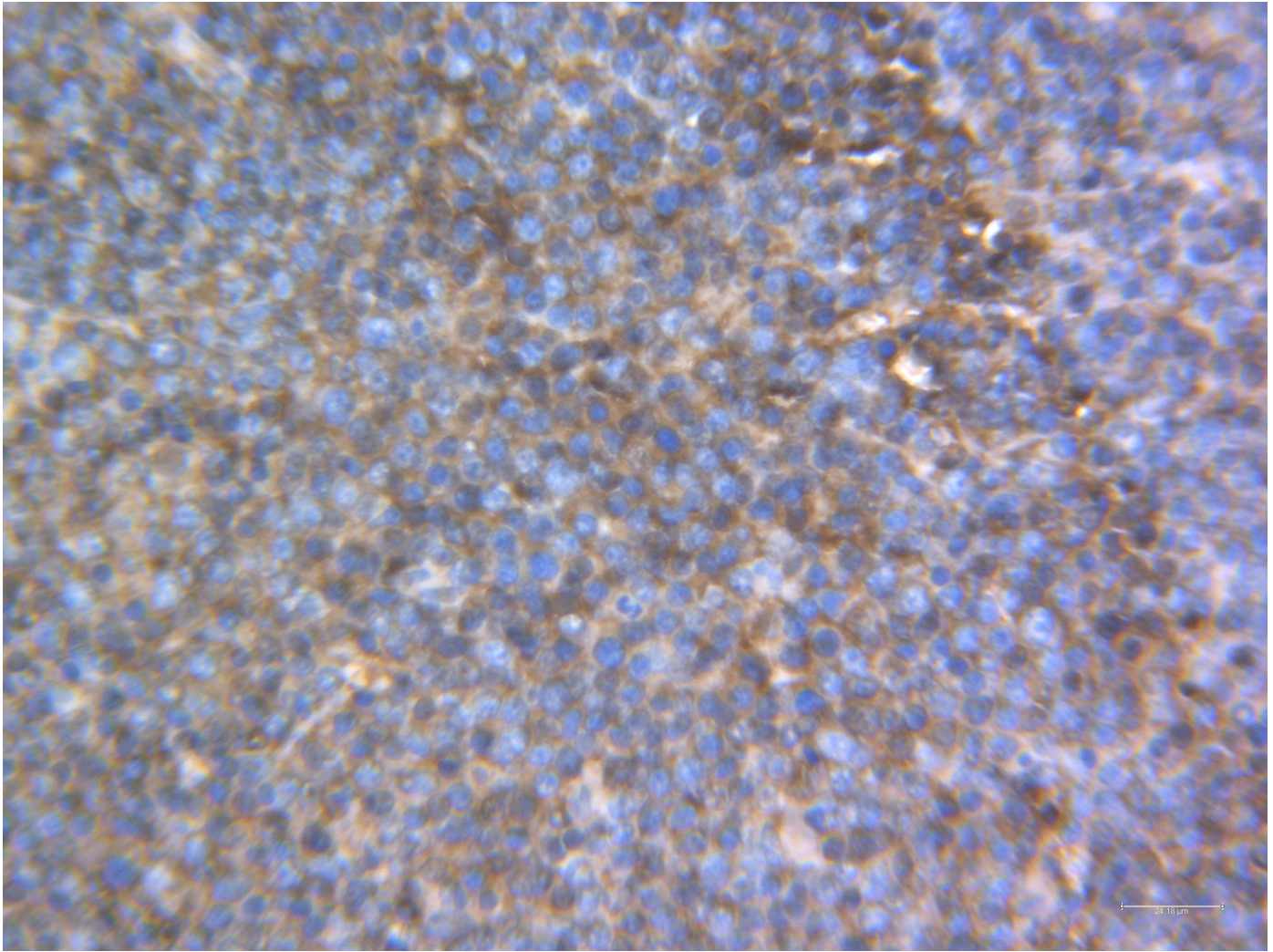
Storage:**Short-term:** 4°C for 1 month**Long-term:** at -20°C or below in suitable aliquots after reconstitution for 1 year. Do not expose to multiple freeze/thaw cycles or store working, diluted solutions.**Recommended Usage****Western Blotting:** 0.5-1 ug/ml**IHC-P:** 1-5 ug/ml. Sodium citrate pH6 antigen retrieval is recommended.**Immunocytochemistry:** 1-5 ug/ml. Permeabilization in tween-20 is recommended at a concentration of 0.1-.25% in PBS.

*Above concentrations are a suggestion and user's must optimize assay based on their conditions. Antibody may work in other applications such as Flow Cytometry, IF, or IP. These methods have not been tested by ADI.

**This product is for In vitro research use only.*

LYVE1H-A

182510IA



4 μm Human lymphoma: Tissue section was heated for 20 minutes at 60°C then deparaffinized. Antigen retrieval was performed for 10 minutes at 95°C in sodium citrate pH 6 in a microwave. The slide was cooled for 20 minutes at room temperature then blocked with 2.5% normal goat serum for 30 minutes at room temperature. **LYVE1H-A** was diluted in TBST to a concentration of 5 ug/ml then incubated overnight at 4°C. The slide was washed 3 times in PBST then incubated in 3% hydrogen peroxide for 10 minutes at room temperature. The slide was in PBST 2 times then incubated with a Goat anti-rabbit IgG HRP polymer detection reagent for 30 minutes. The slide was washed 3 times in PBST then incubated with DAB for 3 minutes. The slide was washed with distilled water then counterstained with Gil's II Hematoxylin for 1 minutes. The slide was washed in tap water until the dye ran clear and dipped in sodium bicarbonate before coverslipping.